

Light efficiency:

97 Lumen/Watt

Light quality:

CRI: 91.5

Color temperature:

3131 K

Output: 1649 lm

Peak: 840 cd

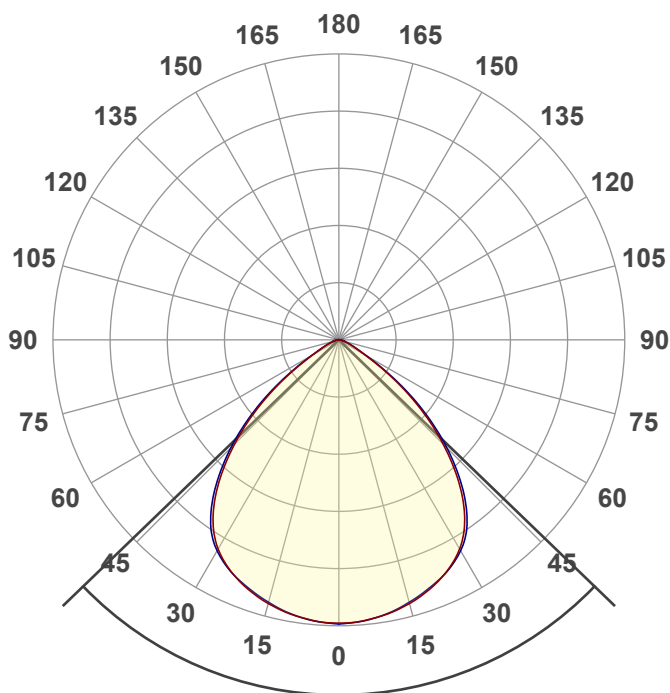
Power: 17.0 W

PF: 0.96



NU3-RD-SW-20LM-30K-90-20D-WDL-WH-WH

Date and time:
9/12/2025 4:16:22 PM



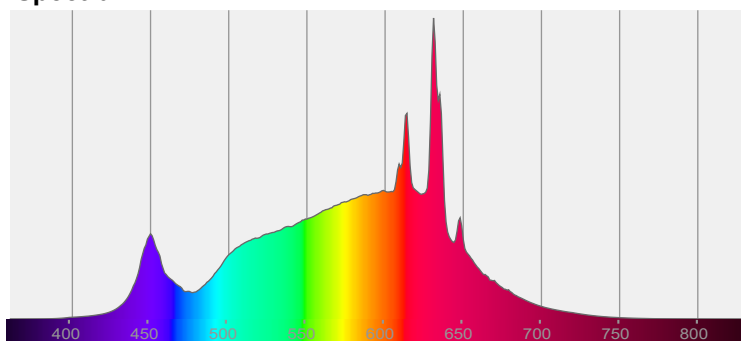
Beam angle

92.1°

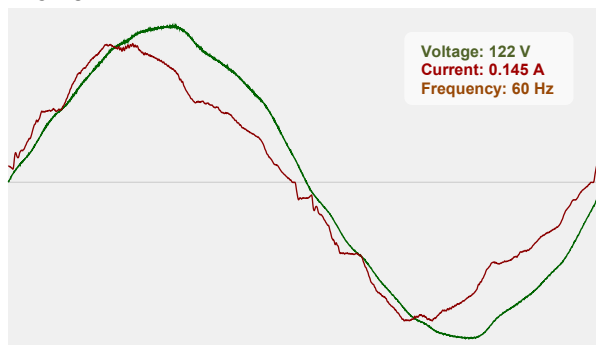


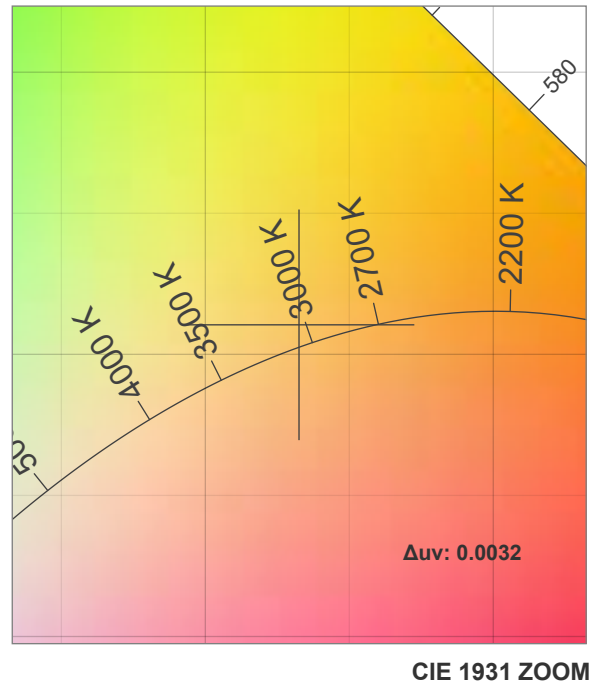
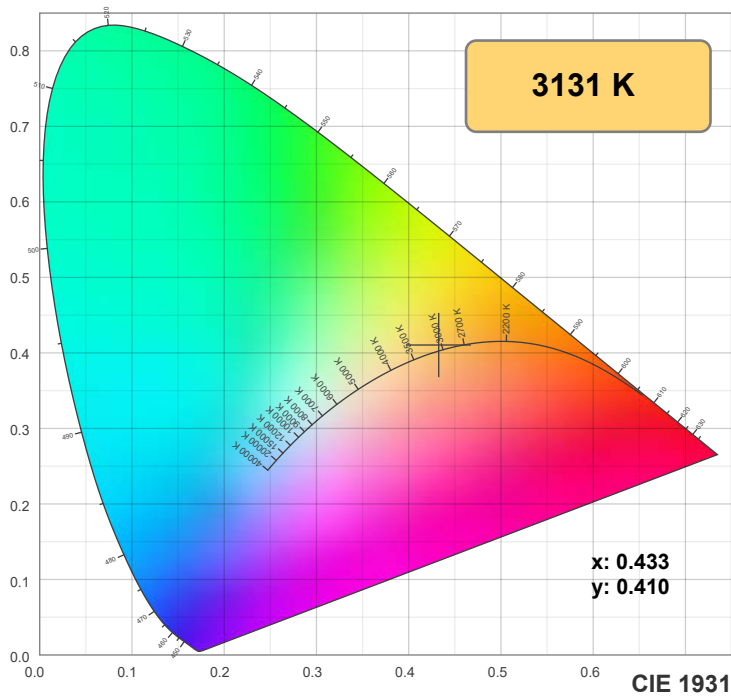
CIE 1931
x: 0.433
y: 0.410

Spectra

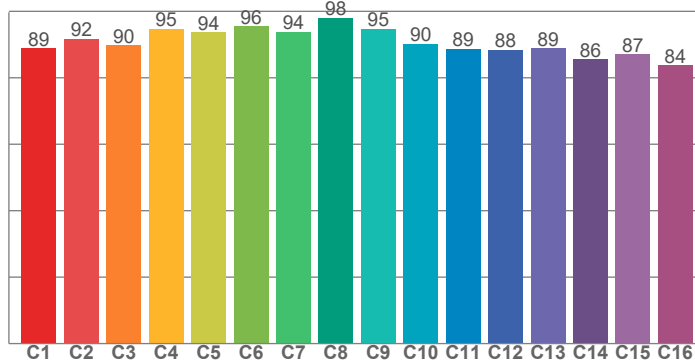


Power

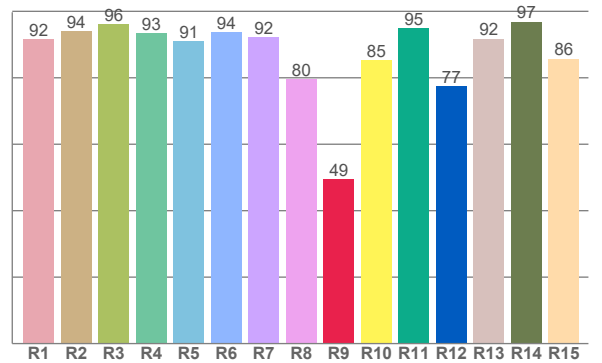




TM30: 91.0



CRI: 91.5 (R1-R8)



CRI R values, only R1-R8 are used to calculate final CRI value

R1	R2	R3	R4	R5	R6	R7	R8	R9	R10	R11	R12	R13	R14	R15
91.5	94.0	96.1	93.4	91.0	93.8	92.3	79.6	49.4	85.2	94.9	77.4	91.8	96.9	85.7

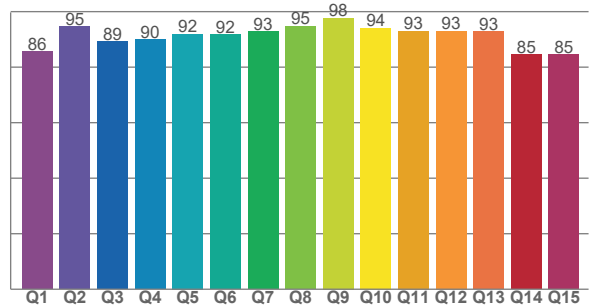
TM30 C values, 16 binned values out of total of 99 C values

C1	C2	C3	C4	C5	C6	C7	C8	C9	C10	C11	C12	C13	C14	C15	C16
88.9	91.6	89.7	94.8	93.7	95.5	93.9	98.0	94.7	90.2	88.7	88.4	88.9	85.5	87.1	83.7

CQS Q values

Q1	Q2	Q3	Q4	Q5	Q6	Q7	Q8	Q9	Q10	Q11	Q12	Q13	Q14	Q15
85.6	94.6	89.2	89.9	91.9	91.7	92.9	94.7	97.7	94.2	93.0	93.0	92.8	84.5	84.6

CQS: 90.4



Color parameters

Color temperature	Color rendering index	Red component	Color fidelity	Color gamut	Color quality scale	Color coordinate cie 1931	Color coordinate cie 1931	Color coordinate	Color coordinate	Color deviation from black body
CCT	CRI	CRI R9	TM30 Rf	TM30 Rg	CQS	x	y	u	v	Δuv
3131 K	91.5	49.4	91.0	98.6	90.4	0.433	0.410	0.245	0.349	0.0032

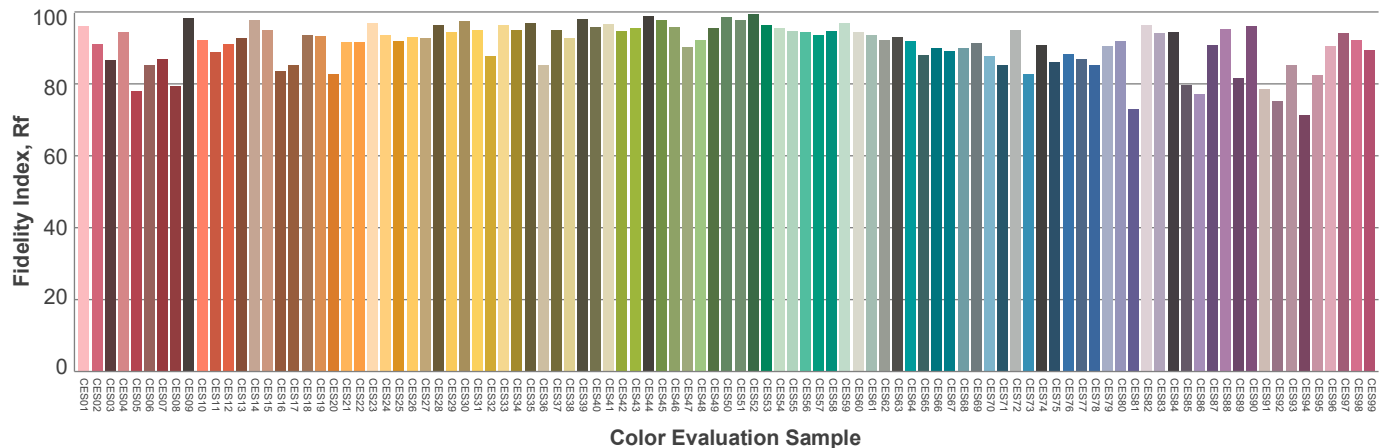
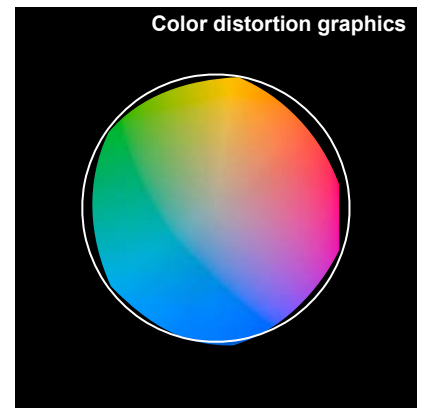
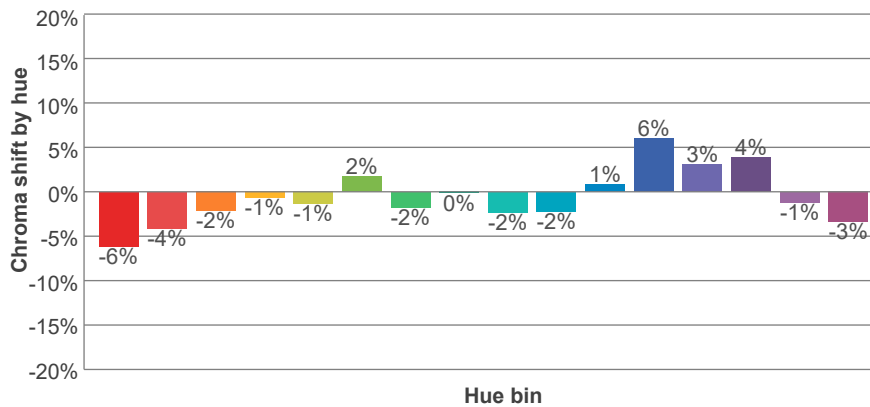
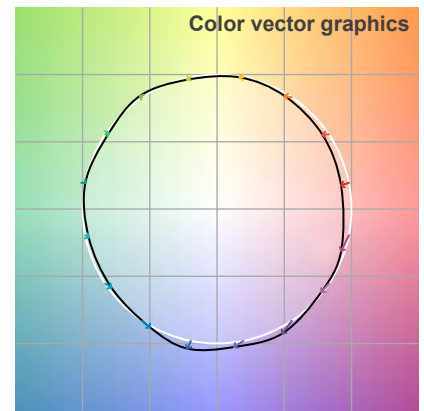
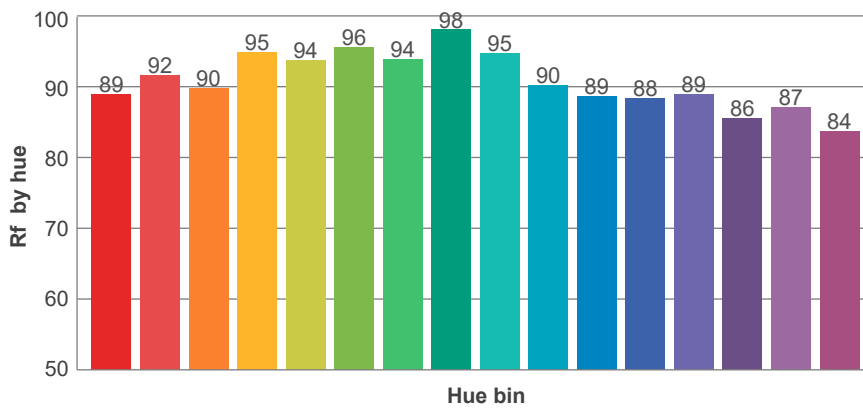
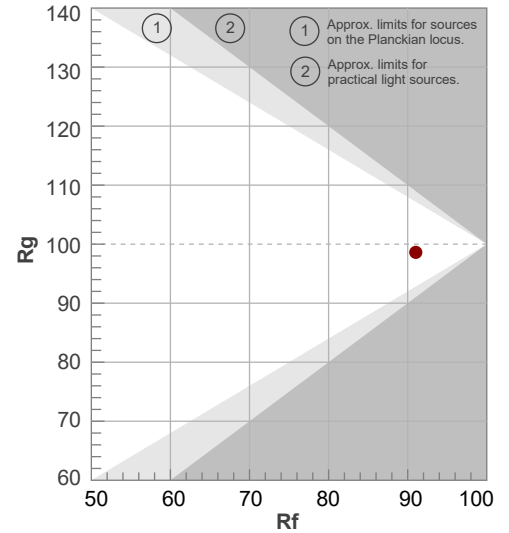
Rf 91.0

Fidelity index Rf

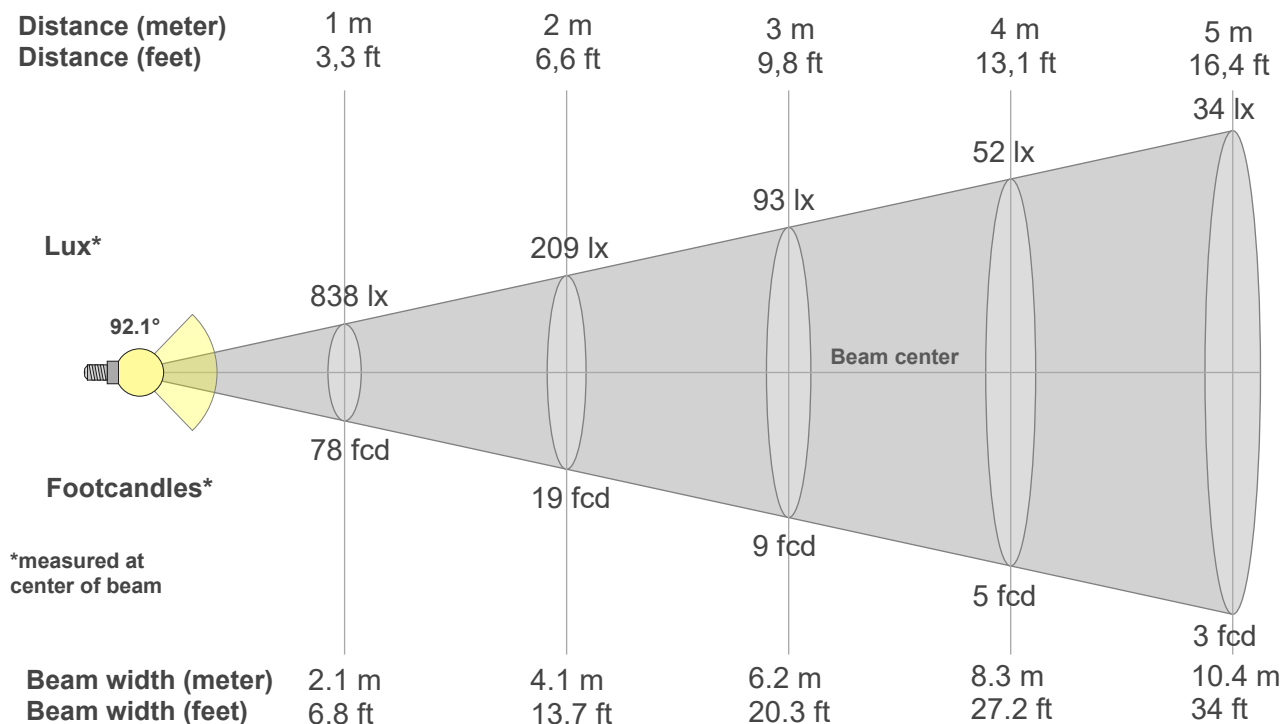
Rg 98.6

Gammut index Rg

Hue Bin	R _f	Graphic shifts (%)	
		Chroma	Hue
1	89	-6%	-1%
2	92	-4%	2%
3	90	-2%	5%
4	95	-1%	3%
5	94	-1%	3%
6	96	2%	1%
7	94	-2%	-2%
8	98	0%	0%
9	95	-2%	2%
10	90	-2%	5%
11	89	1%	8%
12	88	6%	-1%
13	89	3%	-8%
14	86	4%	-11%
15	87	-1%	-8%
16	84	-3%	-12%



Color Evaluation Sample



Beam intensities from 1-20m

1m	2m	3m	4m	5m	6m	7m	8m	9m	10m	11m	12m	13m	14m	15m	16m	17m	18m	19m	20m
3.3ft	6.6ft	9.8ft	13.1ft	16.4ft	19.7ft	23ft	26.2ft	29.5ft	32.8ft	36.1ft	39.4ft	42.7ft	45.9ft	49.2ft	52.5ft	55.8ft	59.1ft	62.3ft	65.6ft
838lx	209lx	93lx	52lx	34lx	23lx	17lx	13lx	10lx	8lx	7lx	6lx	5lx	4lx	4lx	3lx	3lx	3lx	2lx	2lx
77.8fcd	19.5fcd	8.6fcd	4.9fcd	3.1fcd	2.2fcd	1.6fcd	1.2fcd	1fcd	0.8fcd	0.6fcd	0.5fcd	0.5fcd	0.4fcd	0.3fcd	0.3fcd	0.3fcd	0.2fcd	0.2fcd	0.2fcd

Intensities in 0° c-plane

0°	5°	10°	15°	20°	25°	30°	35°	40°	45°	50°	55°	60°	65°	70°	75°	80°	85°	90°	95°
838	833	823	806	784	754	713	647	552	436	311	187	90	50	27	15	12	2	1	1
100%	99%	98%	96%	94%	90%	85%	77%	66%	52%	37%	22%	11%	6%	3%	2%	1%	0%	0%	0%

Intensities in 90° c-plane

0°	5°	10°	15°	20°	25°	30°	35°	40°	45°	50°	55°	60°	65°	70°	75°	80°	85°	90°	95°
838	834	821	803	781	755	719	660	566	451	325	197	96	50	28	13	14	4	0	0
100%	100%	98%	96%	93%	90%	86%	79%	68%	54%	39%	24%	11%	6%	3%	2%	2%	0%	0%	0%

Intensities in 180° c-plane

0°	5°	10°	15°	20°	25°	30°	35°	40°	45°	50°	55°	60°	65°	70°	75°	80°	85°	90°	95°
838	833	823	806	784	754	713	647	552	436	311	187	90	50	27	15	12	2	1	1
100%	99%	98%	96%	94%	90%	85%	77%	66%	52%	37%	22%	11%	6%	3%	2%	1%	0%	0%	0%

Intensities in 270° c-plane

0°	5°	10°	15°	20°	25°	30°	35°	40°	45°	50°	55°	60°	65°	70°	75°	80°	85°	90°	95°
838	834	821	803	781	755	719	660	566	451	325	197	96	50	28	13	14	4	0	0
100%	100%	98%	96%	93%	90%	86%	79%	68%	54%	39%	24%	11%	6%	3%	2%	2%	0%	0%	0%

Beam angle 50%	Field angle 10%	Cutoff angle 2,5%	Intensity ratio in 120° cone	Intensity ratio in 90° cone
92.1°	121.4°	143.8°	95.5%	75.6%